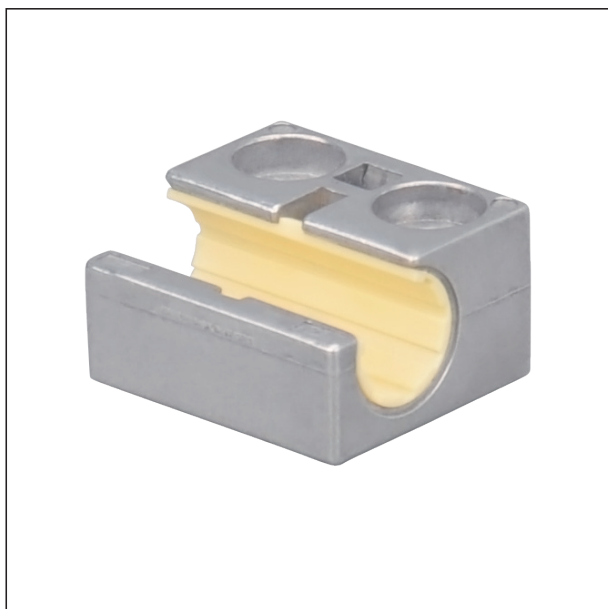


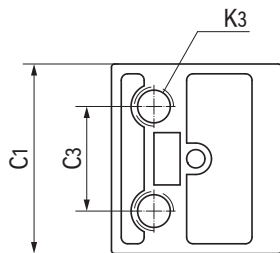
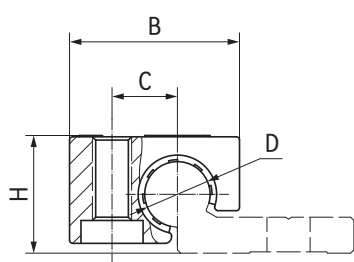
WRU01圆导轨滑块 Round rail sliding blocks



产品特性 Product features

- 低成本、免维护
 - 压铸铝合金基座
 - 可选滑动膜EPB13, MN2
 - 抗灰尘、低噪音
 - 可用于WR系列单轨和双轨
- Low cost, Maintenance-free
 - Die-casting aluminum housing
 - EPB13 and MN2 liners are available
 - Resistant dust and low noise
 - For WR single and dual guide rails

标准规格 Standard specifications



产品编码 Part No.:

WRU01-10-DC-MN2

材料 Material: MN2
空白 Blank: EPB13

压铸铝 Die-cast aluminum

内径 Inner diameter

产品编码 Part No.	D [mm]	公差 Tolerance [mm]	B [mm]	C ₃ [mm]	C ₁ [mm]	H [mm]	K ₃ [mm]	C [mm]	静态载荷 Static load			重量 Weight [g]
									Coy- [N]	Coz+ [N]	Coz- [N]	
WRU01-10-DC	10	+0.083/+0.020	26	16	29	18	M6	10	1200	1200	250	18
WRU01-10-DC-MN2	10	+0.083/+0.020	26	16	29	18	M6	10	1200	1200	250	18